

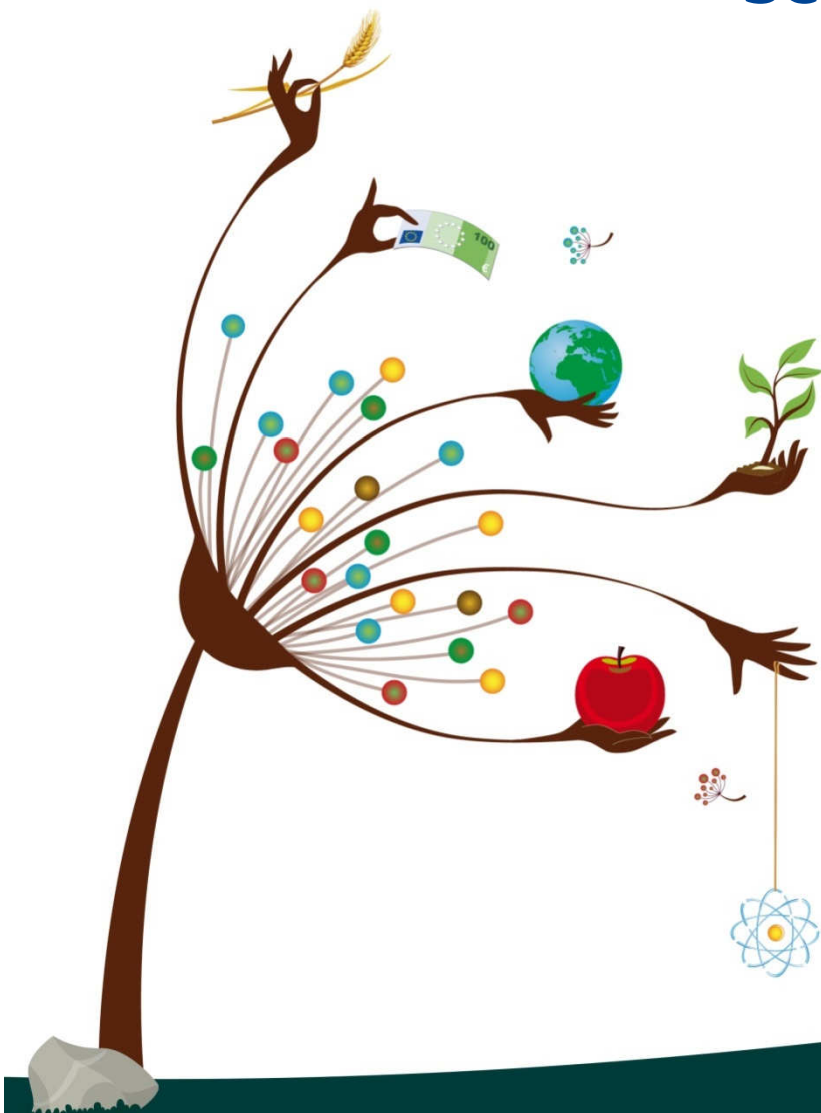
The European Commission's science and knowledge service

Joint Research Centre

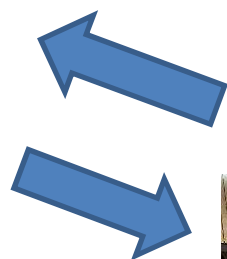
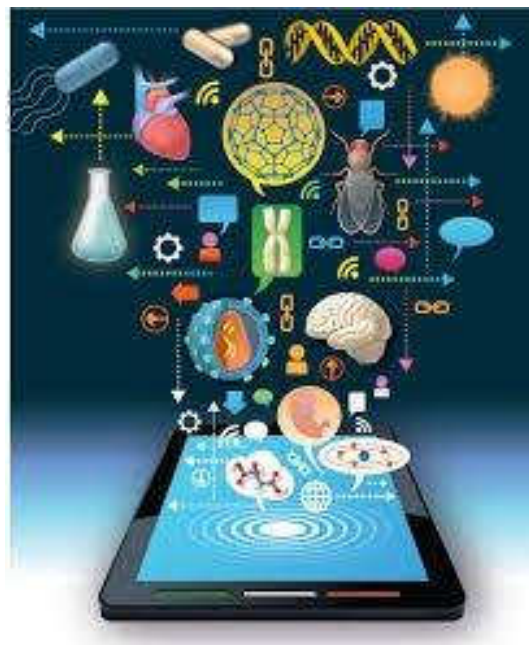
JRC Scientific Support to Enlargement and Integration

Black Sea Horizon International Conference
08-05-2017

Luciana Zanier
Unit for Interinstitutional
International Relations & Outreach
Luciana.zanier@ec.europa.eu



The need for evidence to inform policy



Two Worlds in Collision





Can

You must be a policymaker. You came out of nowhere with your questions, I give you the most accurate and precise answer I can, you're still lost, and you blame me!



Source: Creating common purpose: the integration of science and policy in Canada's Public Service, Canadian Centre for Management Development, 2002



DG JRC Role

"As the **science and knowledge** service of the Commission our mission is to **support EU policies with independent evidence** throughout the **whole policy cycle**"



Established in
1957



10
Directorates



Thematic focus areas

Board of Governors



6
Locations
in 5
Member
States



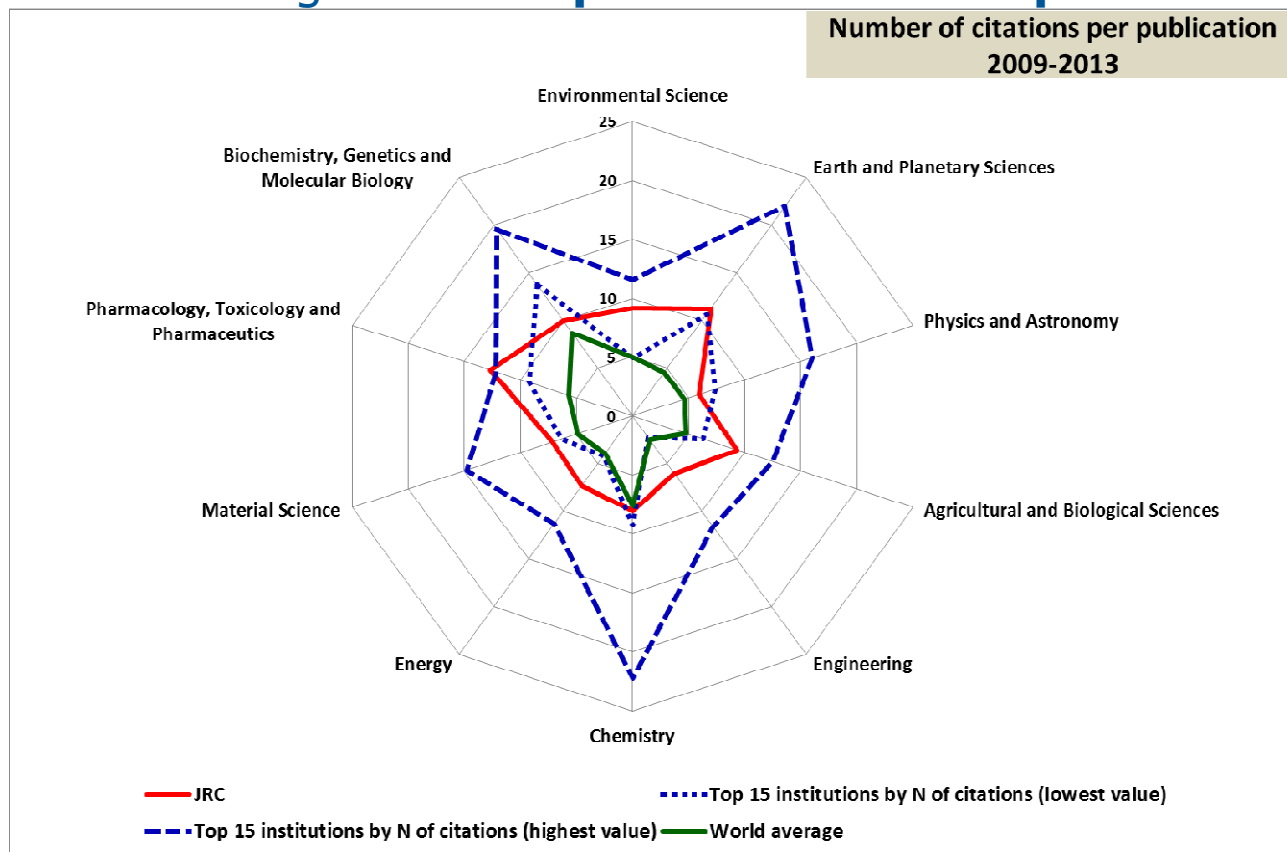
42
Large scale
facilities



European
Commission

DG JRC Scientific Excellence

- **40-50%** of JRC publications belong **to the top 25% most cited publications**
- **Up to 23%** belong to the top **10% most cited publications**
- **Up to 3%** belong **to the top 1% most cited publications**



Strategic partnerships

Collaboration Agreements, Memoranda of Understanding, Letters of Intent...

Scientific networks

Partnering in H2020 calls

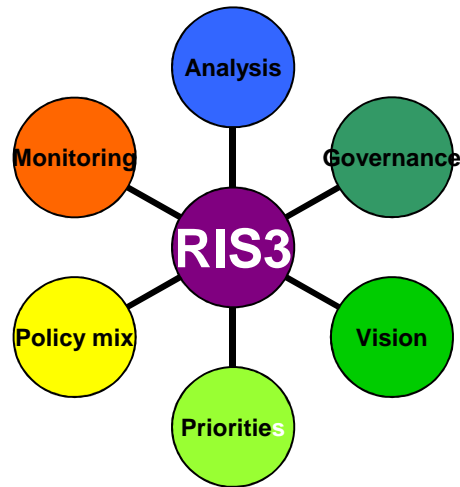
Joint work in research, publications and events

Exchange of information and data

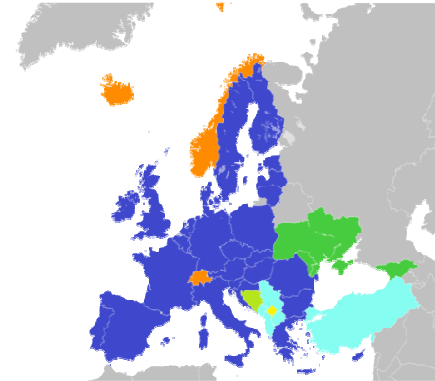
...but no transfer or money possible!



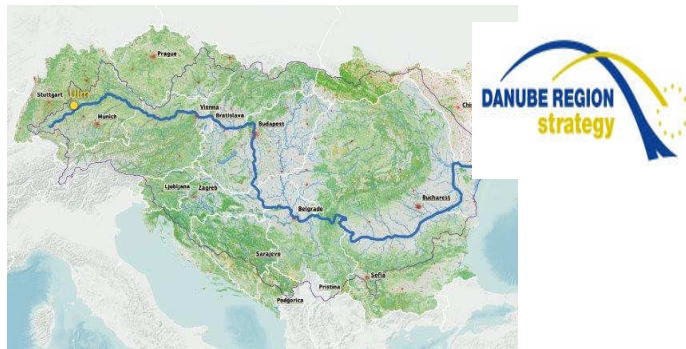
JRC Scientific Support to MS + H2020 countries



Smart Specialisation



JRC support to H2020 Associated countries



JRC scientific support to Danube Region



Innovation Camps



- EU Countries registered in S3P: 18
- EU Regions registered in S3P: 170
- Non-EU Countries registered in S3P: 2
- Non-EU Regions registered in S3P: 8
- S3P Peer-reviewed Countries: 15
- S3P Peer-reviewed Regions: 60

Smart Specialisation Platform

Since 2011 supporting Member States & Regions to design and implement their S3 by identifying a limited number of R&D and industrial activities with *high innovation potential*.

Description	Capabilities	Target Markets	EU Priorities
Green building, energy saving, new construction materials.	1. Construction	1. Construction	1. Sustainable innovation 2. Eco-innovations
Life science, diagnostics, bio-pharmaceuticals.	1. Human health & social work activities	1. Human health & social work activities 2. Human health activities (medical services)	1. Public health & security 2. Public health & well-being
Monitoring and prevention of natural risks.	1. Public administration, security & defence	1. Public administration, security & defence	1. Public health & security
ICT for cultural heritage.	1. Information & communication technologies (ICT)	1. Creative, cultural arts & entertainment 2. Libraries, archives, museums & other cultural activities	1. Cultural & creative industries
ICT for tourism.	1. Information & communication technologies (ICT)	1. Tourism, restaurants & recreation 2. Travel agency, tour operator & other reservation service & related activities	1. Service innovation
Food security, environmental sustainability of agro-food processes.	1. Agriculture, forestry & fishing	1. Agriculture, forestry & fishing 2. Agricultural services	1. Public health & security 2. Food security & safety
Trans-shipment and inter-modality logistics.	1. Transporting & storage	1. Transporting & storage 2. Water transport & related services	1. Blue growth 2. Transport & logistics (incl. highways of the seas)

Main activities of the S3 Platform

Support to RIS3 Implementation

	SSP	S2E	Lag Reg
	"Smart Specialization"	"Stairway to excellence"	"Lagging Regions"
Key Issues	Entrepreneurial discovery process (EDP) Monitoring / evaluation	Efficiency/effectiveness of R&I ecosystem Synergies between R&I funding streams	Governance Support Catalysing EDP Translate priorities into projects
Territorial Coverage	EU28 MSs & Regions Macro-regional Initiatives Urban & Rural Initiatives	EU28 MSs & Regions	Selected MSs, Regions & Cities
Thematic Coverage	Thematic SSPs (digital/energy/ agro-food/industrial modernization)	Thematic R&I Support (some focus on H2020)	Regional thematic priorities (some focus on bio/agro-food, ICTs)

Targeted support to actors, processes and learning
Stimulating stakeholders' involvement
Interactive web tools
Analytical support

Eye@RIS3

Research & Innovation Capabilities

Select ▼

Business Areas & Target Market

Select ▼

EU Priority

Blue growth ▼

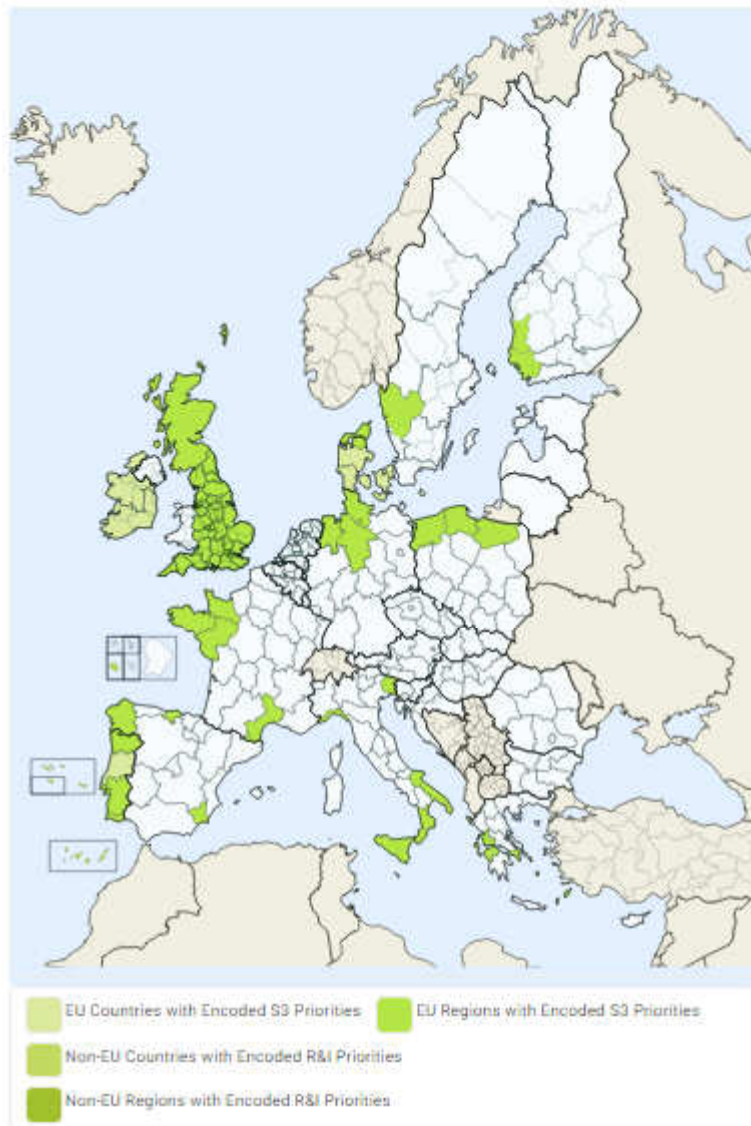
Select
Aeronautics & space
Blue growth
Cultural & creative industries
Digital Agenda
KETs
Nature & biodiversity
Public health & security
Service innovation
Social innovation
Specific local policy priority
Sustainable innovation

Select
Agriculture, forestry & fishing
Construction
Creative, cultural arts & entertainment
Energy production & distribution
Human health & social work activities
Information & communication technologies (ICT)
Manufacturing & industry
Mining & quarrying
Public administration, security & defence
Services
Tourism, restaurants & recreation
Transporting & storage
Water supply, sewerage, waste management & remediation activities
Wholesale & retail trade

EU Priority (Subcategory)

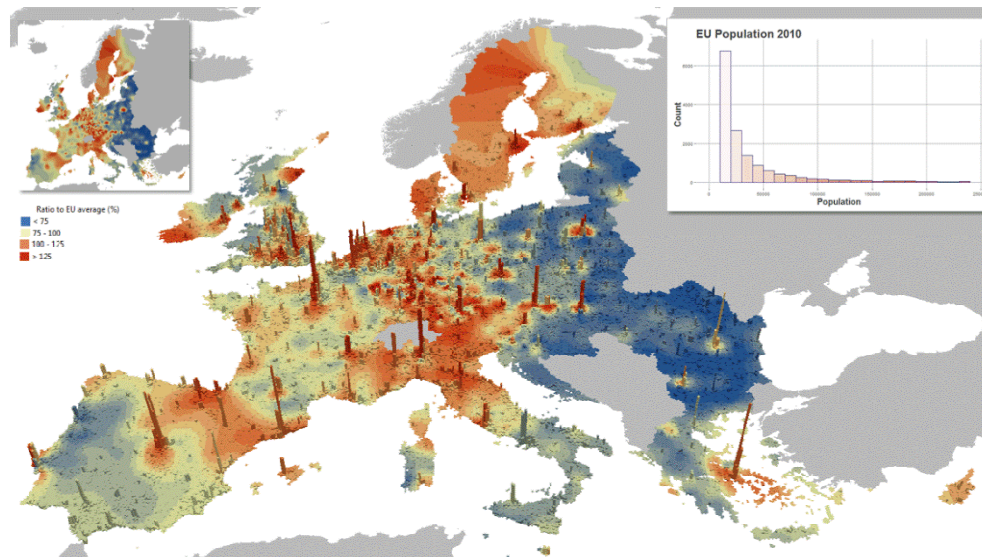
Select ▼

Select
Aquaculture
Blue renewable energy
Coastal & maritime tourism
Fisheries
Marine biotechnology
Offshore mining, oil & gas
Shipbuilding & ship repair
Transport & logistics (incl. highways of the seas)

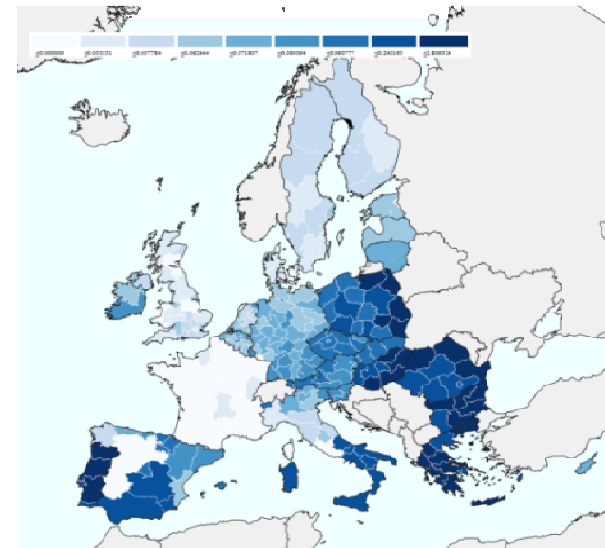


Integrated Territorial Modelling

RHOMOLO and **LUISA** are analytical instruments to capture territorial and economy-wide effects of investments and reforms.



***GDP and Demographic trends
(Reference)***



***GDP impacts by
2023***

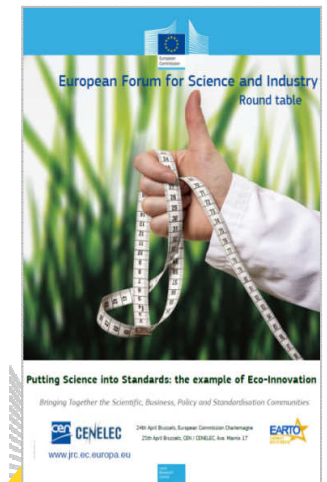
JRC support to H2020 Associated countries

JRC Enlargement and Integration Action

Training and capacity building in the key priority areas creating a local pull of knowledge and a critical mass of JRC's competences

Peer reviews, on-the job training, community of practice

Specific programme of networking activities for the nuclear sector



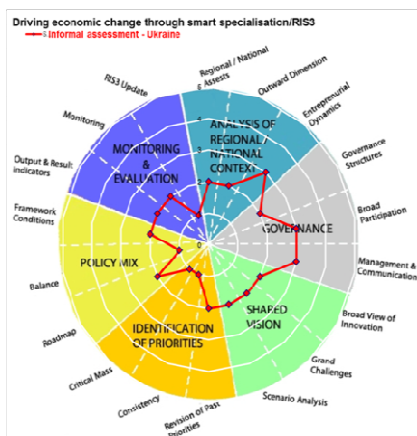
JRC support to Smart Specialisation Approach Pilot Project (Ukraine)

Scope:

To provide capacity building assistance for more competitive R&I activities in Europe
To foster territorial development through the engagement of national and regional communities
Align innovation activities at national and regional level with the industrial fabric

Areas that need particular attention

Expert assessment



Self assessment

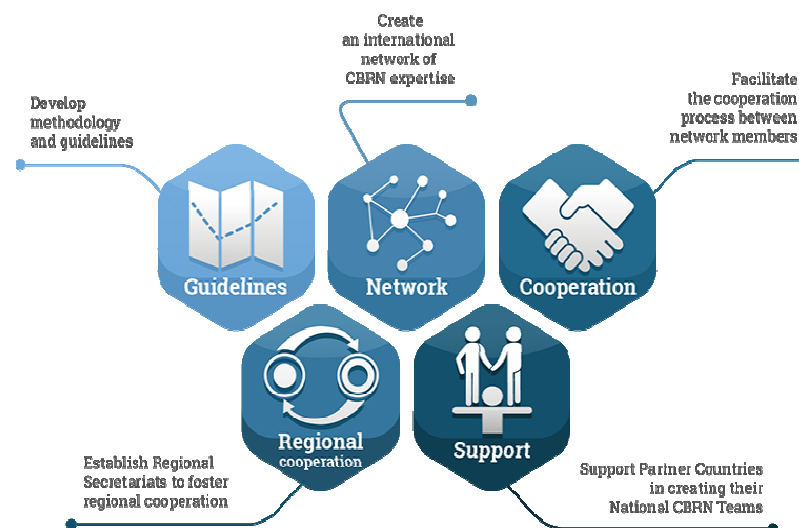
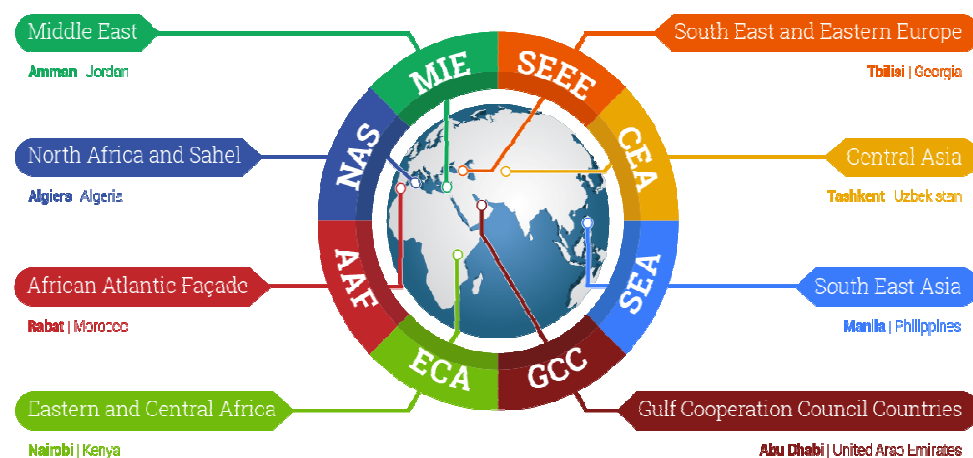


Next steps/road map:

- Establishing a Coordination Group
- Mapping with a JRC expert sectorial and regional assets
- Raising awareness
- Starting the EDP (Entrepreneurial Discovery Process) in a pilot priority area (and expand thereafter)
- Conducting additional mapping if needed and demanded by stakeholders
- Organising a final international conference to announce the adoption of S3 strategy

JRC support to H2020 Associated countries

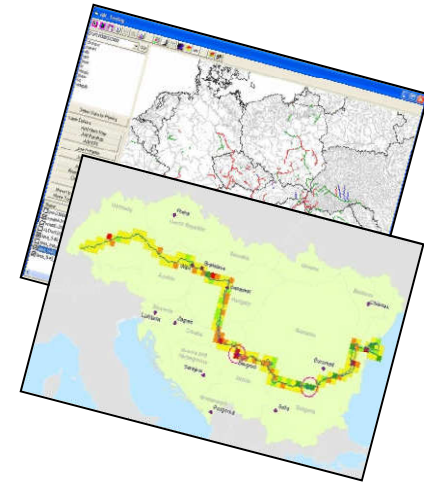
EU CBRN Risk Mitigation Centres of Excellence Initiative



JRC Scientific Support to the Danube Strategy

4 thematic flagship clusters:

- Danube Water Nexus
- Danube Land and Soil Nexus
- Danube Air Nexus
- Danube Bioenergy Nexus



3 horizontal flagship clusters:

- Danube Reference Data and Service Infrastructure
- Support to research and innovation strategies for S3
- Danube Innovation Partnership (**Technology Transfer**)



Innovation Camps

- The **local and regional level** is critical for effective governance
- Regions concentrate on **a few focus areas** which have a special value for that region
- **Innovation Camps** address societal and economic challenges **concerning local societies**
- Innovation Camps stimulate and enhance a **culture of innovation on the ground**
- Culture **towards entrepreneurship and risk taking** are needed to turn Europe a more **innovative, dynamic and competitive economy** in a globalised world.
- Quadruple helix model: **governments, business and academia, but also civil society**
- Bottom-up approach, relies on self-organising principles,
- needs political endorsement and a certain level of institutional governance

Innovation Camps

Gabrovo Innovation Camp 2016



To stay in touch and thank you



JRC Science Hub: www.ec.europa.eu/jrc



Facebook: EUsciencehub



Twitter: @EU_ScienceHub



LinkedIn: european-commission-joint-research-centre



YouTube: JRC Audiovisuals