



International Centre for Black Sea Studies  
Building a Sustainable Future for the Black Sea Area

## **“WEB-GIS Observatory Network for the Environmental and Sustainable Development of the Black Sea Area”**

*Ms. Alexia Timotheou, Environment & Sustainable Development Expert*  
*Ms. Amaryllis Koufantoni, ICBSS Administrative Support*

**Athens, 21 December 2011**

# Current picture

- Lack of systematic gathering, validation and communication of comparable primary Data and Indicators, concerning Environment and Sustainable Development in the Black Sea area
- Fragmented implementation of programs and policies and lack of an integrated picture and focused knowledge on the basic data and figures regarding the Black Sea area
- Several databases with economic, social and environmental statistics (e.g. OECD, EEA, UN etc.), giving socio-economic and environmental data per country

## However:

- It is an open question whether these data are comparable in terms of time and content
- There are no integrative data for the whole area and it is not possible to make statistical comparisons
- This information is not imported in statistical and spatial databases, meaning that it is not possible for users to make queries and comparisons and illustrate the results on a map.

---

## ICBSS' expertise

- Experience of researchers and experts who have already worked on the establishment of Observatories (e.g. ESPON European Spatial Planning Observation Network and OSPE - Observatory of Spatial Planning and Environment project in Balkans and Adriatic area)

---

# ICBSS Web-GIS Observatory

- Initiative for the establishment of an integrated mechanism in the form of a **WEB-GIS Observatory** which will gradually gather and process data related to sustainable development and environment
- Initially, a small number of data and indicators in national and regional level (NUTS 0 and NUTS 2) has been selected and validated from different sources (UN, OECD, World Bank, CIA, IMF, EEA etc.)

Categories of data and indicators:

- Geographic position
  - Environment and natural assets
  - Economic strength
  - Social integration
  - Accessibility
- Possible further development with the cooperation of the National Statistical Agencies of the Black Sea countries (NUTS 2 level)
-

---

## Aims of Observatory

- The creation of a strategic tool that will provide information services, support policies and development programs for all interested actors of the Black Sea region
  - The support of policy-makers who need to compare data and define similarities and/or differences among different countries and regions
  - The provision of valuable information to NGOs and local development agencies regarding environmental and sustainable development dimensions
  - The promotion of cooperation and networking among the Black Sea countries
  - The higher placement of environmental concerns and priorities in the agenda of policy-makers in all sectoral policies
  - The establishment of an institutionalised network for the future
-

---

# Structure of the Observatory

- The Geographic Information System (G.I.S.)
  - The Interactive Mapping Analysis
  - The Statistical Analysis
-

---

## G.I.S. application specifications

- A Relational Data Base for storing the data and indicators
  - A geographical database for storing the spatial data (administrative boundaries, road network, cities, ports etc.)
  - An internet map server for publishing the application to the internet
-

---

# The Interactive Mapping Analysis features

- ◆ Creation of thematic map compositions based on selected data or indicators
  - ◆ Common map tools (Pan, Zoom, Re-centre, Distance measurement etc.)
  - ◆ Feature Identification tool
  - ◆ Custom classification tool for selected data or indicators
  - ◆ Export tool for printing or saving the map composition
-



---

# The Statistical Analysis features

For each of the selected dataset, display:

- The actual data values for each geographical feature
  - Metadata  
(time reference, data sources etc.)
  - Monovariate statistics  
(min, max, sum, mean, std deviation etc.)
  - Charts
-

---

# ICBSS new Portal

[www.icbss.org](http://www.icbss.org)

Aims:

- exchange of valuable information and knowledge
- strengthening of cooperation in the wider Black Sea area

How to become a member:

- “Join the ICBSS Community”
- Fill in your basic information (e-mail, name, and password)
- Agree on terms of use, select “submit registration”, login to your email account and verify

Now you can:

- a) create groups and upload articles or post comments
  - b) access discussion forums
  - c) interact with other scientists, researchers etc.
  - d) access the ICBSS secondary menu (under construction)
-



# International Centre for Black Sea Studies

Building a Sustainable Future for the Black Sea Area

Home page Sitemap Contact us Log in

About us Activities Library More features

**Search**

Projects - Ongoing

Projects - Completed

Conferences / Events

Symposium

Summer School 2011

Internship


Black Sea Research Network

**Newsletter**

Submit your email here

Join the ICBSS  
Become a Member

Observatory Network  
Black Sea area

Follow us:  

## Latest news



## Energy Cooperation and Environmental Protection in the wider Black Sea area

The International Centre for Black Sea Studies (ICBSS) & the Center for Strategic Studies under the President of the Republic of Azerbaijan (CSS)

kindly invite you to [Round Table Discussion](#) on

### "Energy Cooperation and Environmental Protection in the wider Black Sea area"

Athens, Tuesday, 29 November 2011

Click here for the  
Invitation

*Press Release and Draft Agenda are also available for download.*

[read more](#)

2011-09-27

## ICBSS Events 2011

Dr. Zefi Dimadama is going to participate at the **BSEC Forum on Facilitation on Road Transport and Trade**, held under the patronage of the Secretary General of BSEC Organization, H. E.

## Featured projects



### SEARCH

Sharing Knowledge Assets:  
InteRegionally Cohesive  
Neighborhoods

SEARCH is a project financed by the European Union under the Seventh Framework Programme for Research and Technological Development in the 'Socio-economic sciences and the humanities' area.

Also visit website:

SEARCH

### HDF

The **"Green Cluster of Knowledge Institutions of Black Sea: A Roadmap on Renewable Energy Sources and Energy Efficiency for Research and Academic Institutions"** is a project coordinated by the ICBSS and funded by the BSEC – Hellenic Development Fund. The project was launched on 1st August 2011 and its duration will be 1 year.

You can also find attached an [introduction by Dr. Zefi Dimadama from the Kick-off meeting Web Conference](#)



## International Centre for Black Sea Studies

Building a Sustainable Future for the Black Sea Area

[Home page](#)[Sitemap](#)[Contact us](#)[Log in](#)[About us](#)[Activities](#)[Library](#)[More features](#)**Search****Newsletter**

Submit your email here

**Join the ICBSS Community**  
Become a Member

**Web GIS Observatory Network**  
For the Black Sea area

**Follow us:**

### User registration

In order to become an ICBSS member, you must fill-in the following form. Make sure you read the terms of use carefully before registering.

e-mail  \*First name  \*Last name  ICBSS \*Password  \*Repeat password  \*I have read the [terms of use](#) ☐ \*I agree with the [terms of use](#) ☐ \*

#### Important notes

Once you register, you will not be able to change your e-mail

**Partners**



## International Centre for Black Sea Studies

Building a Sustainable Future for the Black Sea Area

About us ▾ Activities

Search



Join the ICBSS Community  
Become a Member

### User registration

In order to become an ICBSS member, please read the terms of use carefully before registering.

e-mail

First name

Last name

Password

Repeat password

I have read the [terms of use](#)

I agree with the [terms of use](#)

✓ Submit registration

#### Important notes

Once you register, you will not be able to change your e-mail

Partners

### User login

e-mail

portal@gmail.com

password

••••••••

✓ Login

Not a member? Register here

Oops! I forgot my password



**Search**

**Newsletter**


Submit your email here

**My Profile**  
Access my account details

**Web GIS Observatory Network**  
For the Black Sea area

**Follow us:**  

## User profile | ICBSS Greece



Country	Greece (Ελλάδα)
Member since	2011-10-24
Last login	2011-11-28



### About me

The International Centre for Black Sea Studies (ICBSS) was founded in 1998 as a non-profit organisation. It has since fulfilled a dual function: a) it is an independent research and training institution focusing on the wider Black Sea region, b) it is a related body of the Organisation of the Black Sea Economic Cooperation (BSEC) and serves as its acknowledged think-tank.

### Contact information

icbss@icbss.org

### Member of groups

- 2011 Summer School
- 4th International Black Sea Symposium
- HDF
- ICBSS Team

### My profile options

[Log out](#)

[My profile](#) - [Edit my profile](#)

[My messages \(0 unread\)](#) - [Send a message](#)

[My contacts](#) - [Find contacts](#)

[My groups](#) - [Find groups](#)

[Send an invitation](#)

Please note that icbss.org is still in beta (testing) version.  
You may [report any problems to the icbss team](#).

---

## Application use overview

Step 1: Query the database for data and indicators.

Step 2: Create a selection of the data and indicators.

Step 3: The application will display the data selection as a thematic map.

---

# 1: Select the data category (example: Demography)

## Web-G.I.S. Observatory Network for the Environmental and Sustainable Development of the Black Sea Area

Category: any  Layer: any

Search results

- 03. Economic Strength
  - 03.01 Income and production
  - 03.02 Economic growth
  - 03.03 Primary Sector
  - 03.04 Secondary Sector
  - 03.05 Tertiary Sector
  - 03.06 Trade
  - 03.07 Foreign direct investment
  - 03.08 Employment / Unemployment
  - 03.09 Tourism
  - 03.10 Information and Communications Technology (ICT)
  - 03.11 Research and Development (R&D)
- 04. Social Integration
  - 04.01 Demography**
  - 04.02 Migration
  - 04.03 Health
  - 04.04 Standard of Living
- 05. Accessibility
  - 05.01 Urban network
  - 05.02 Transportation

>

Selected data



## 2: Select the geographical layer (example: Nuts 2)

Web-G.I.S. Observatory Network for the Environmental and Sustainable Development of the Black Sea Area

Category: 04.01 Demography

Layer: any

Search data

Search results

- any
- Nuts 0: Countries
- Nuts 2: Regions

>

Remove selected data

Remove all data

# 3: Perform a search and view search results

## Web-G.I.S. Observatory Network for the Environmental and Sustainable Development of the Black Sea Area

Category: 04.01 Demography Layer: Nuts 2: Regions Search data

### Search results

#### Nuts 2: Regions

- ☐ Population (2010)
- ☐ Population (1990)
- ☐ Population (2000)
- ☐ Population (2005)
- ☐ Population (1995)
- ☐ Population Change (2000-2010)
- ☐ Population Density (2010)
- ☐ Population Density reduced on built space (2010)

>

### Selected data

Remove selected data Remove all data

# 4: Locate and select desired data

## Web-G.I.S. Observatory Network for the Environmental and Sustainable Development of the Black Sea Area

Category: 04.01 Demography  Layer: Nuts 2: Regions

### Search results

#### Nuts 2: Regions

- ☒ Population (2010)
- ☒ Population (1990)
- ☒ Population (2000)
- ☒ Population (2005)
- ☒ Population (1995)
- ☐ Population Change (2000-2010)
- ☐ Population Density (2010)
- ☐ Population Density reduced on built space (2010)

### Selected data

>

# 5: Create a selection of desired data

Web-G.I.S. Observatory Network for the Environmental and Sustainable Development of the Black Sea Area

Category: 04.01 Demography Layer: Nuts 2: Regions Search data Selection Map view Data view

**Search results**

**Nuts 2: Regions**

- ☐ Population Change (2000-2010)
- ☐ Population Density (2010)
- ☐ Population Density reduced on built space (2010)

>

**Selected data**

**Nuts 2: Regions**

- ☐ Population (2010)
- ☐ Population (1990)
- ☐ Population (2005)
- ☐ Population (2000)
- ☐ Population (1995)

Remove selected data Remove all data

\* You may repeat the search procedure and add more items to your selection

# 6: Select the “Map view”

Web-G.I.S. Observatory Network for the Environmental and Sustainable Development of the Black Sea Area

Zoom x 2

0 240 480 720 960 km

Selection Map view Data view

### Map legend

- ☐ Ports
- ☐ Cities
- ☒ Country borders
- ☐ Road network
- ☒ Nuts 2: Regions
- ☐ Elevation/bathymetry - monochrome
- ☒ Elevation/bathymetry - color

Refresh map

### Data classification tool

Data: Population (1990)

Method: Standard deviation

Multiplier: x 1/2

Presentation: Graduated color

Palette: Blue -> White -> Red

Classify

# 7: Map view: Identification tool

Web-G.I.S. Observatory Network for the Environmental and Sustainable Development of the Black Sea Area

Zoom x 2



0 240 480 720 960 km

Selection

Map view

Data view

## Map legend

- ☐ Ports
- ☐ Cities
- ☒ Country borders
- ☐ Road network
- ☒ Nuts 2: Regions
- ☐ Elevation/bathymetry - monochrome
- ☒ Elevation/bathymetry - color

Refresh map

Query results - Mozilla Firefox

## Query results

Data layer: Nuts 2: Regions

	Population (2010)	Population (1990)	Population (2005)	Population (2000)
Definition	Population of the Spatial Unit in 2010	Population of the Spatial Unit in 1990	Population of the Spatial Unit in 2005	Population of the Spatial Unit in 2000
Source	"GeoHive", National Statistical Institutes	"GeoHive", National Statistical Institutes	"GeoHive", National Statistical Institutes	"GeoHive", National Statistical Institutes
Measurement units	Inhabitants	Square Kilometers	Inhabitants	Inhabitants
Area of application	NUTS2	NUTS2	NUTS2	NUTS2
Comments				
Anenii Noi (MD.AN)	83100	83630	81710	81710
Basarabesca (MD.BA)	29400	31612	28978	28978
Bender (MD.BD)	105010		105010	105010
Briceni (MD.BR)	75700	85395	78027	78027
Balti (MD.BT)	148200	161475	127561	127561
Calarasi (MD.CA)	79100	85000	75075	75075
Cahul (MD.CH)	124400	122008	119231	119231
Cantemir (MD.CN)	63100	62864	60001	60001
Criuleni (MD.CR)	73000	71351	72254	72254
Cimislia (MD.CS)	62200	66267	60925	60925
Causeni (MD.CU)	92600	96467	90612	90612

## Data classification tool

Data: Population (1990)

Method: Standard deviation

Multi



# 8a: Map view: Cartographical basis layers

Web-G.I.S. Observatory Network for the Environmental and Sustainable Development of the Black Sea Area

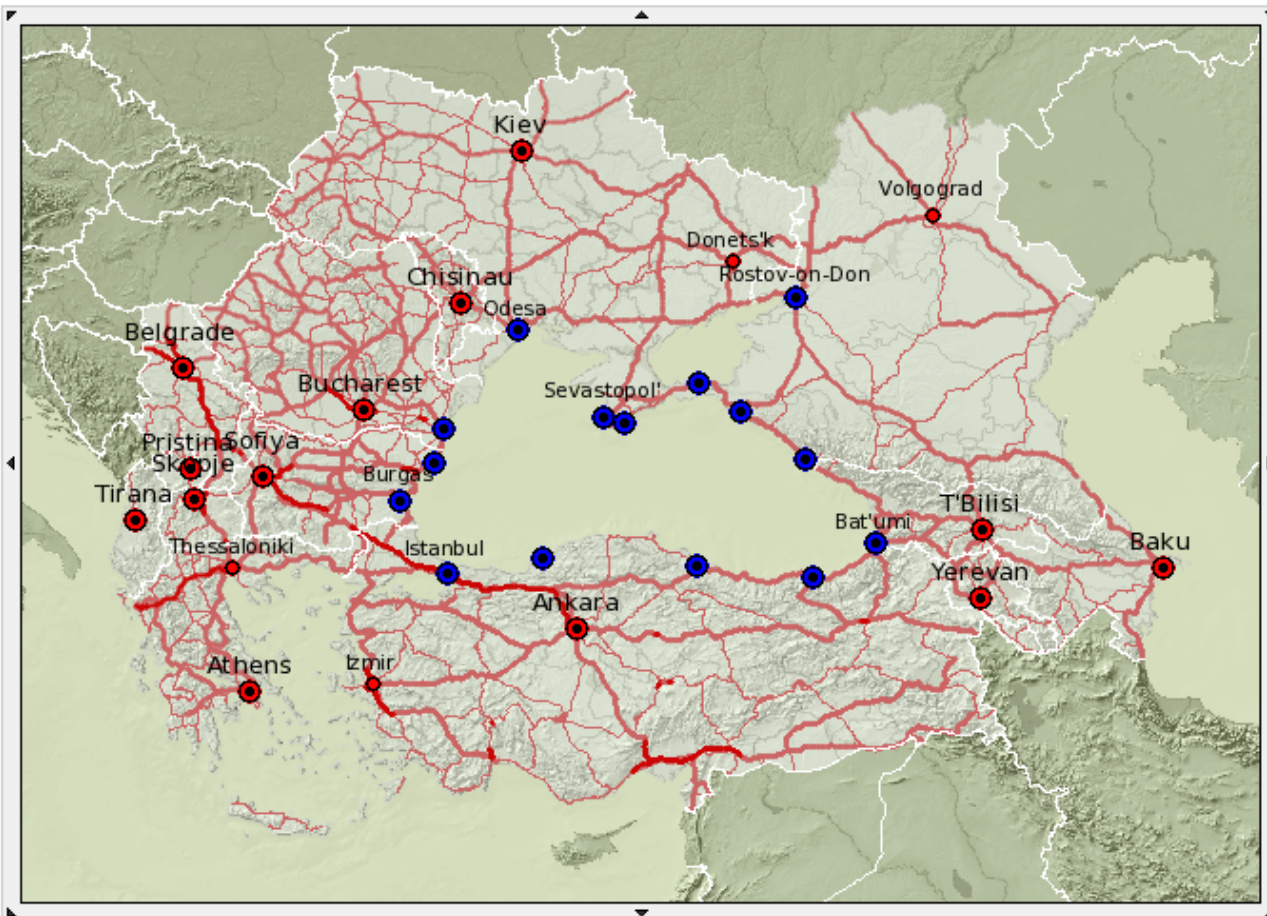
Zoom x 2

0 240 480 720 960 km

Selection

Map view

Data view



## Map legend

- ☒ Ports
- ☒ Cities
- ☒ Country borders
- ☒ Road network
- ☒ Nuts 2: Regions
- ☒ Elevation/bathymetry - monochrome
- ☐ Elevation/bathymetry - color

Refresh map

## Data classification tool

Data: % Croplands (2004-2011)

Method: Standard deviation

Multiplier: x 1/2

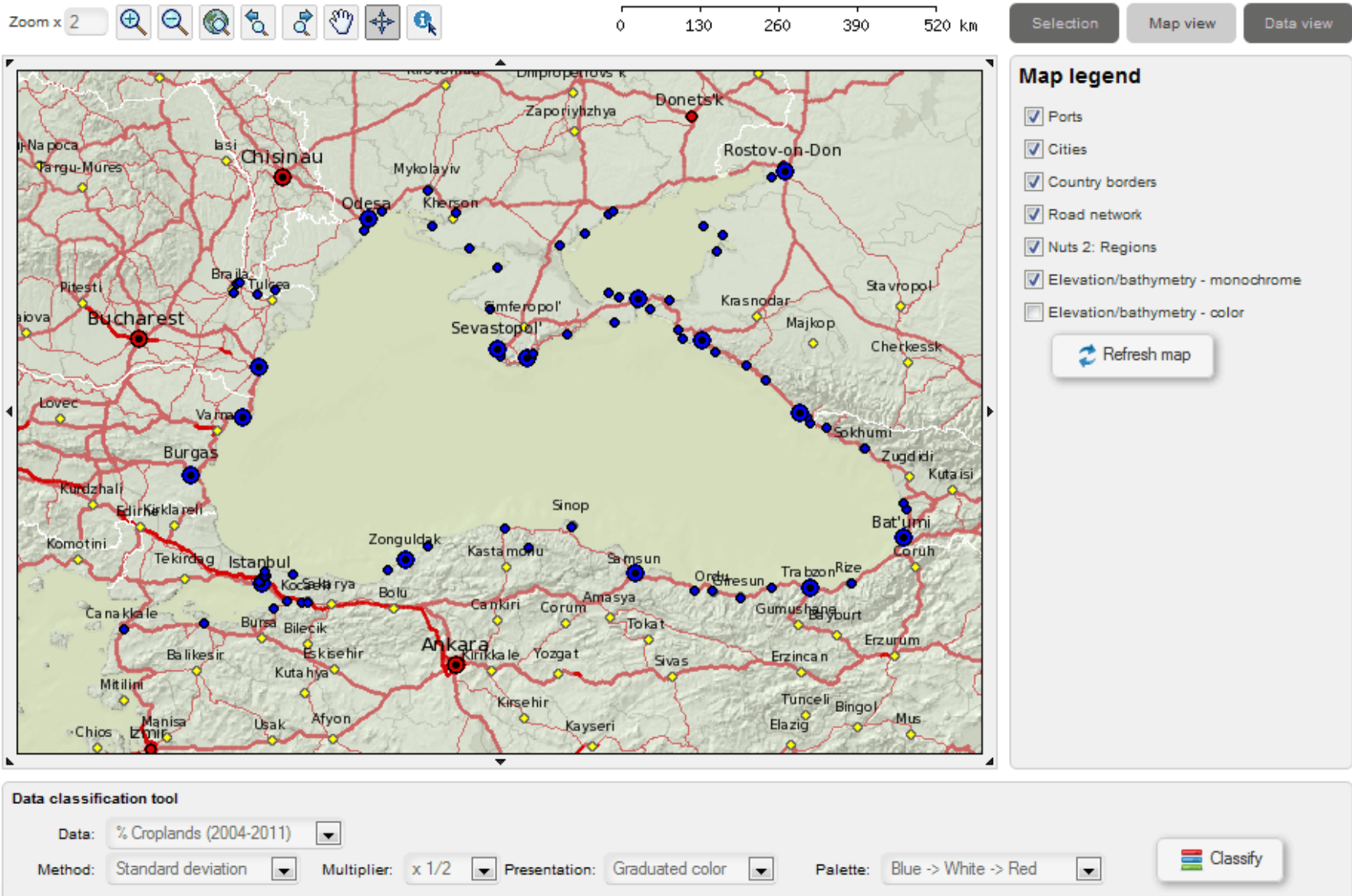
Presentation: Graduated color

Palette: Blue -> White -> Red

Classify

# 8b: Map view: Cartographical basis layers

Web-G.I.S. Observatory Network for the Environmental and Sustainable Development of the Black Sea Area





# 9: “Graduated colors” classification of selected data

Web-G.I.S. Observatory Network for the Environmental and Sustainable Development of the Black Sea Area

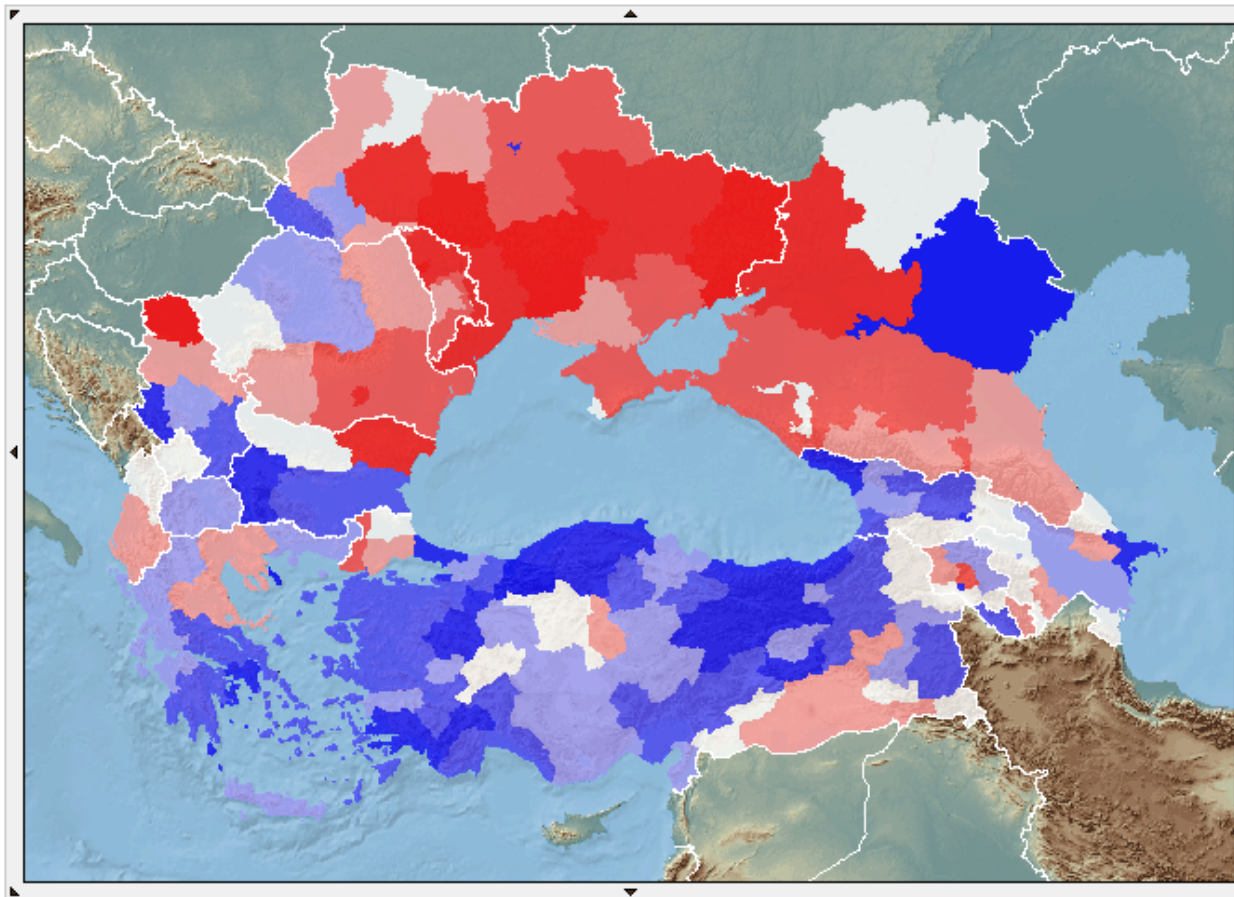


0 240 480 720 960 km

Selection

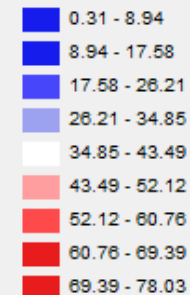
Map view

Data view



## Map legend

Nuts 2: Regions  
% Croplands (2004-2011)



Mean: 39.1728054299  
Std dev: 17.2723049395

[Remove classification](#)

- ☐ Ports
- ☐ Cities
- ☒ Country borders
- ☐ Road network
- ☒ Nuts 2: Regions
- ☐ Elevation/bathymetry - monochrome
- ☒ Elevation/bathymetry - color

Refresh map

## Data classification tool

Data: % Croplands (2004-2011)

Method: Standard deviation

Multiplier: x 1/2

Presentation: Graduated color

Palette: Blue -> White -> Red

Classify

# 10: “Proportional Symbols” map

Web-G.I.S. Observatory Network for the Environmental and Sustainable Development of the Black Sea Area

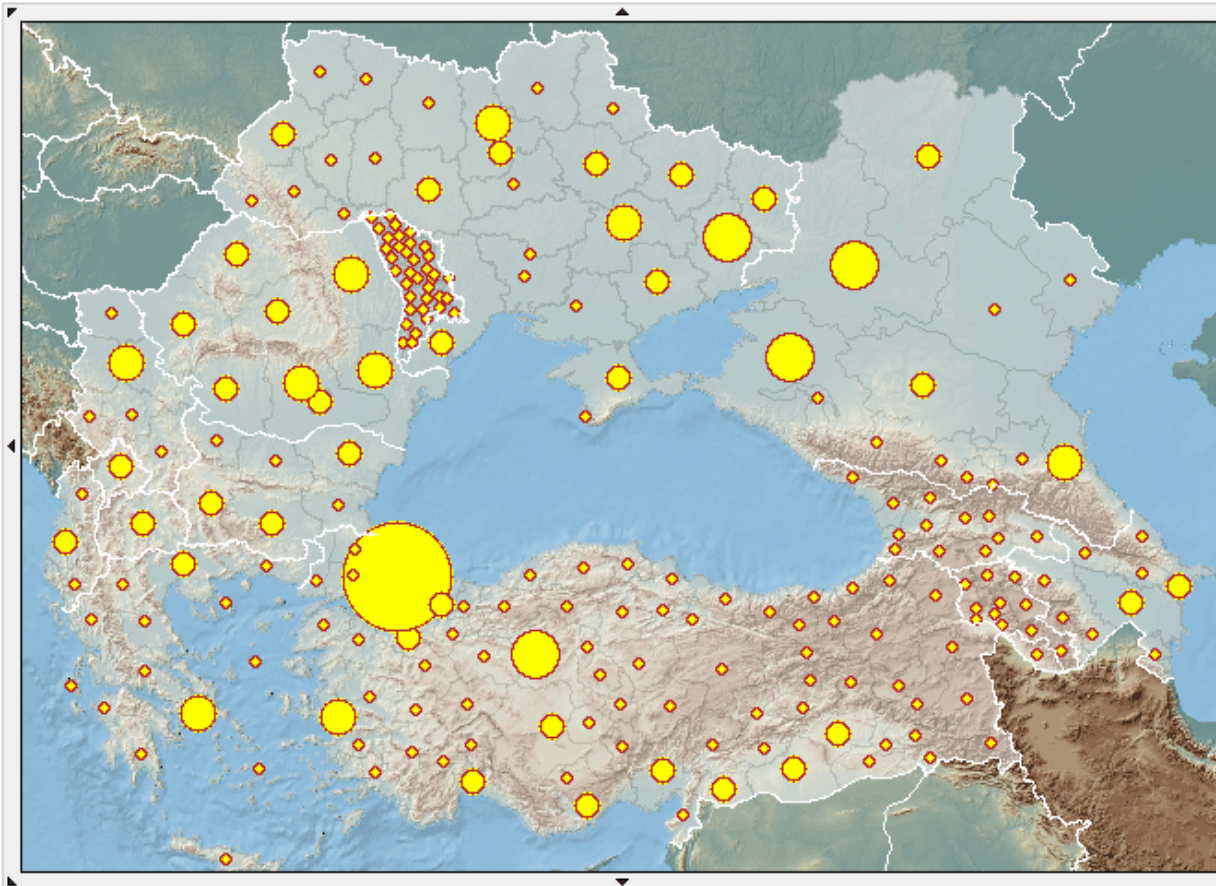


0 220 440 660 880 km

Selection

Map view

Data view



## Map legend

Nuts 2: Regions  
Population (2010)



Mean: 965680.968326  
Std dev: 1257636.94132

[Remove classification](#)

- ☐ Ports
- ☐ Cities
- ☒ Country borders
- ☐ Road network
- ☒ Nuts 2: Regions (points)
- ☒ Nuts 2: Regions
- ☐ Elevation/bathymetry - monochrome
- ☒ Elevation/bathymetry - color

Refresh map

## Data classification tool

Data: Population (2010)

Method: Equal interval

Classes: 9

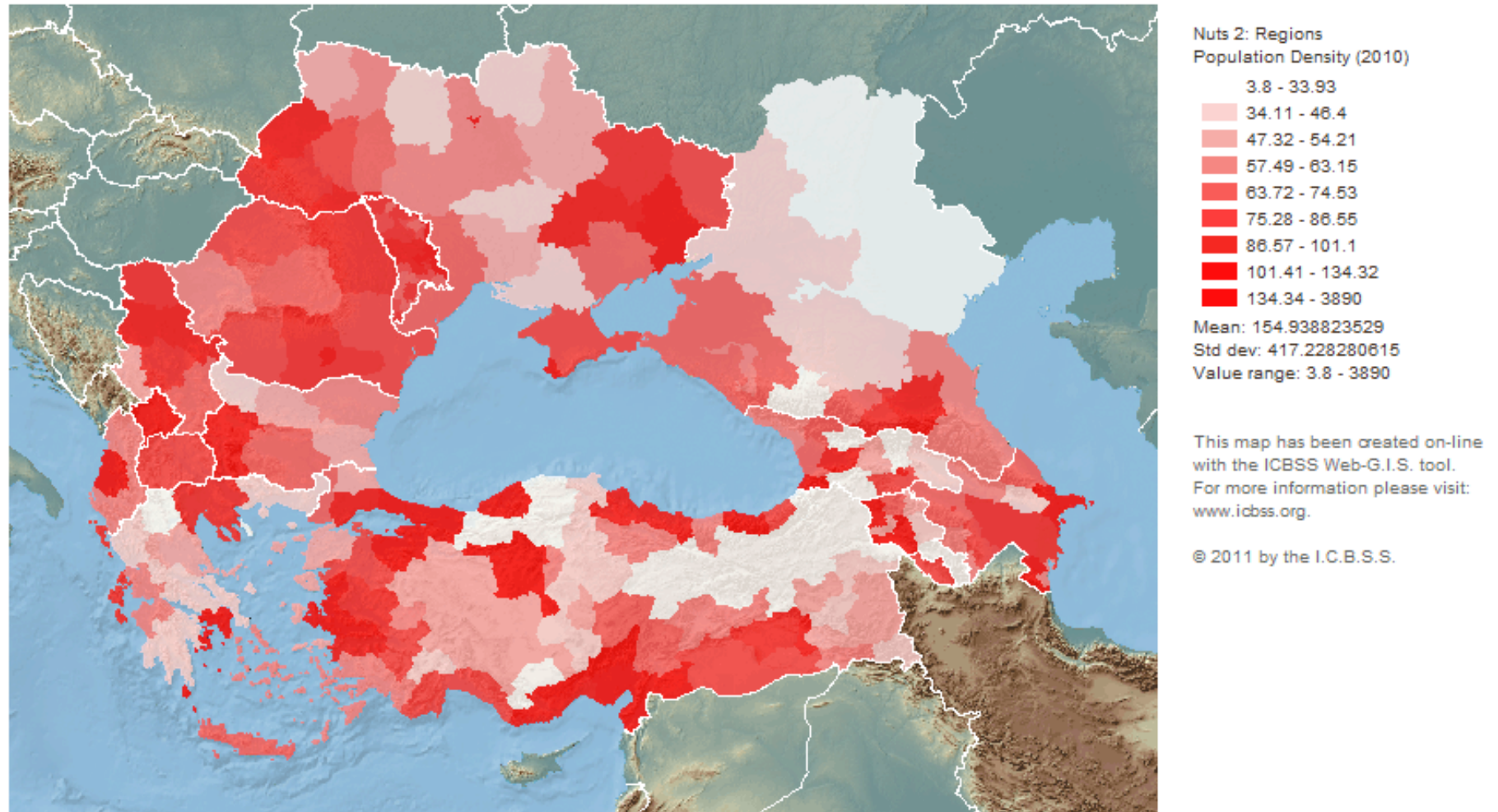
Presentation: Graduated size

Classify



# 11: Printer friendly map version

## Web-G.I.S. Observatory Network for the Environmental and Sustainable Development of the Black Sea Area



# 12: Select the “Data view”

Data layer: Nuts 0: Countries						
	Population		Population		Population Change	
Definition	Population of the Spatial Unit in 2000		Population of the Spatial Unit in 2010		Percentage of Population Change between years 2000 and 2010	
Source	"GeoHive", National Statistical Institutes		"GeoHive", National Statistical Institutes		"GeoHive", National Statistical Institutes	
Measurement units	Inhabitants		Inhabitants		Percentage	
Area of application	NUTS0		NUTS0		NUTS0	
Comments						
Albania (ALB)	3087159	<div></div>	3194972	<div></div>	3.49	<div></div>
Armenia (ARM)	3002594	<div></div>	3249500	<div></div>	8.22	<div></div>
Azerbaijan (AZE)	7953438	<div></div>	8922300	<div></div>	12.18	<div></div>
Bulgaria (BGR)	7932984	<div></div>	7351234	<div></div>	-7.33	<div></div>
Georgia (GEO)	4371535	<div></div>	4436400	<div></div>	1.48	<div></div>
Greece (GRC)	10964020	<div></div>	10787690	<div></div>	-1.61	<div></div>
Moldova (MDA)	3938679	<div></div>	3563700	<div></div>	-9.52	<div></div>
Romania (ROU)	21680974	<div></div>	21584365	<div></div>	-0.45	<div></div>
Russia (RUS)	22907141	<div></div>	23353500	<div></div>	1.95	<div></div>
Serbia (SRB)	7498001	<div></div>	7381579	<div></div>	-1.55	<div></div>
Turkey (TUR)	67808719	<div></div>	70586256	<div></div>	4.1	<div></div>
Ukraine (UKR)	48457102	<div></div>	45779932	<div></div>	-5.52	<div></div>
Kosovo (KO-)	1956196	<div></div>	1956196	<div></div>	0	<div></div>
FYROM (MKD)	2022547	<div></div>	2048619	<div></div>	1.29	<div></div>
Features with data	14 of 14		14 of 14		14 of 14	
Minimum value	1956196 (KO-: Kosovo)		1956196 (KO-: Kosovo)		-9.52 (MDA: Moldova)	
Maximum value	67808719 (TUR: Turkey)		70586256 (TUR: Turkey)		12.18 (AZE: Azerbaijan)	
Sum	213581089		214196243		6.73	
Mean value	15255792.0714		15299731.6429		0.480714285714	
Standard deviation	18985468.8055		19231725.5228		5.53791794848	
Coefficient variation	1.24447611219		1.2569975717		11.5201859255	
Variance	360448025763000		369859266584000		30.6685352041	

---

# **Visualization of the Geodatabase Content**

## **Thematic Map Library Samples**

---



Black Sea WEB-GIS  
Observation Network  
Geoinformatics Lab.  
TEI of Athens

# STUDY AREA COUNTRIES

Administrative Level: NUTS-o



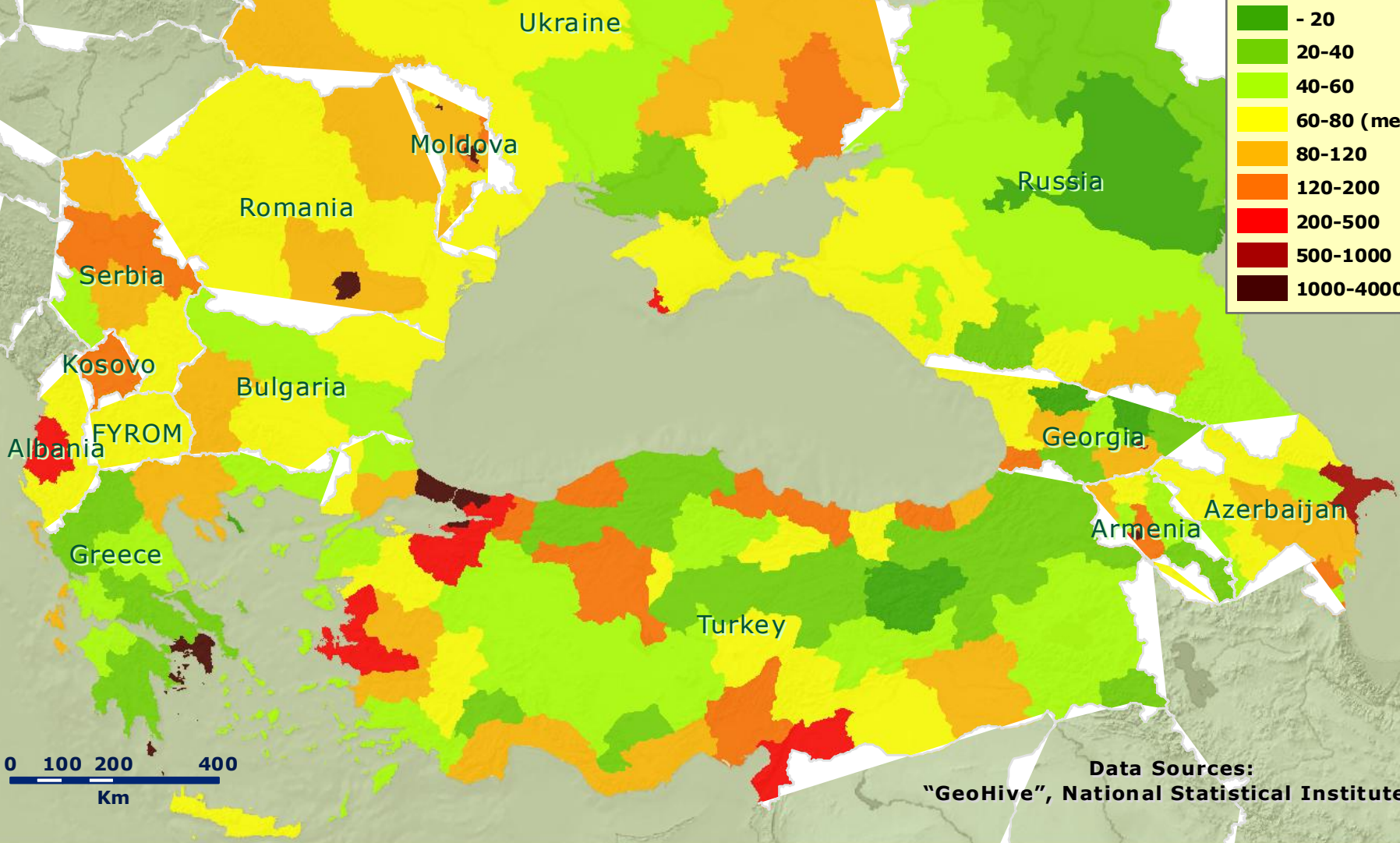
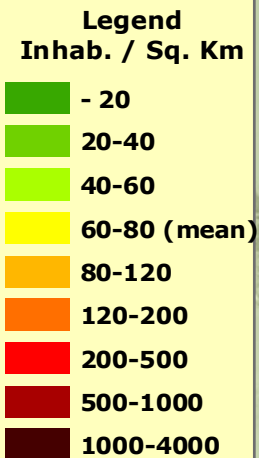


# Regions Administrative Level - NUTS-2

BlackSea WEB-GIS  
Observation Network  
Geoinformatics Lab.  
TEI of Athens



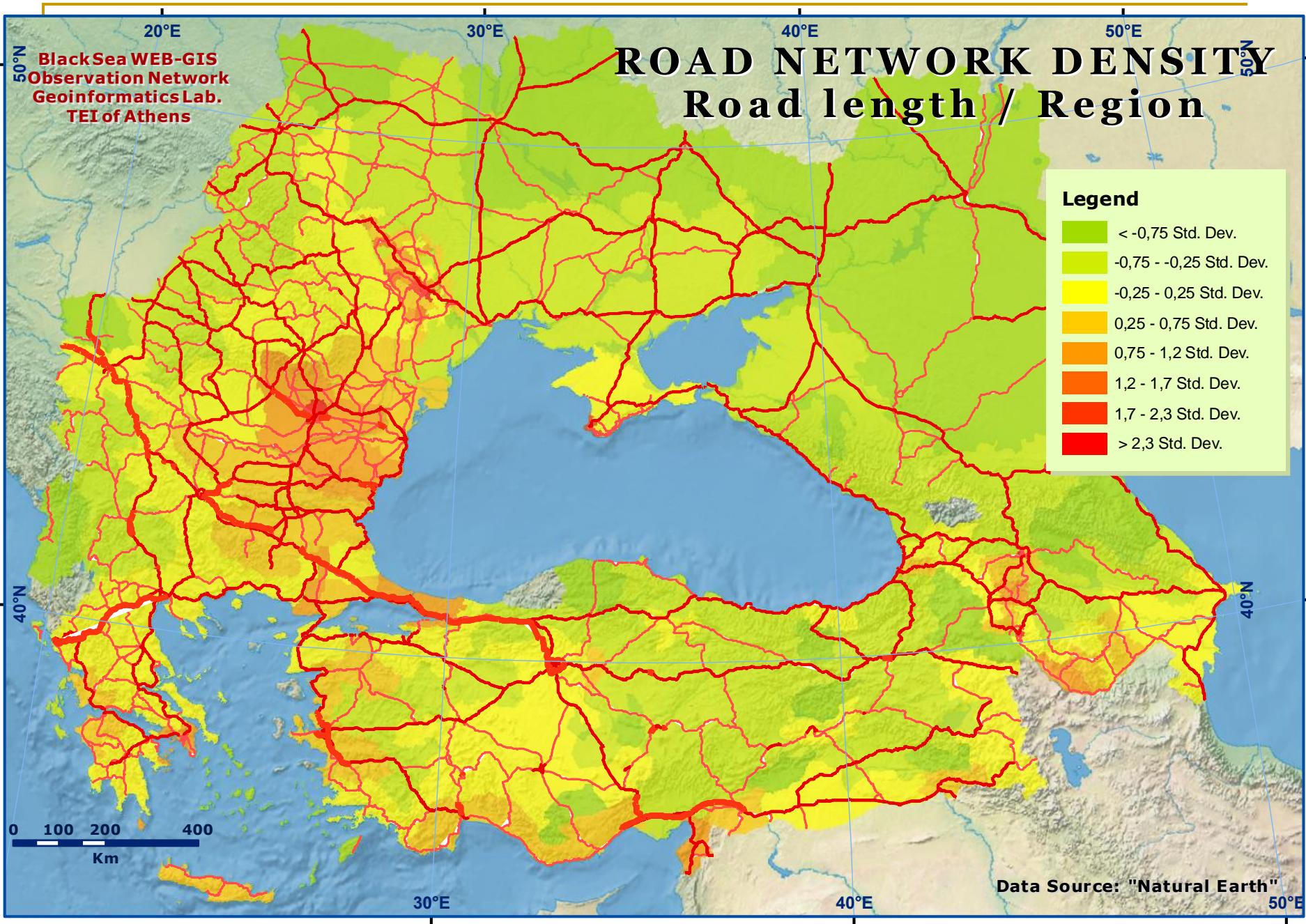
# POPULATION DENSITY



0 100 200 400  
Km

Data Sources:  
"GeoHive", National Statistical Institutes,





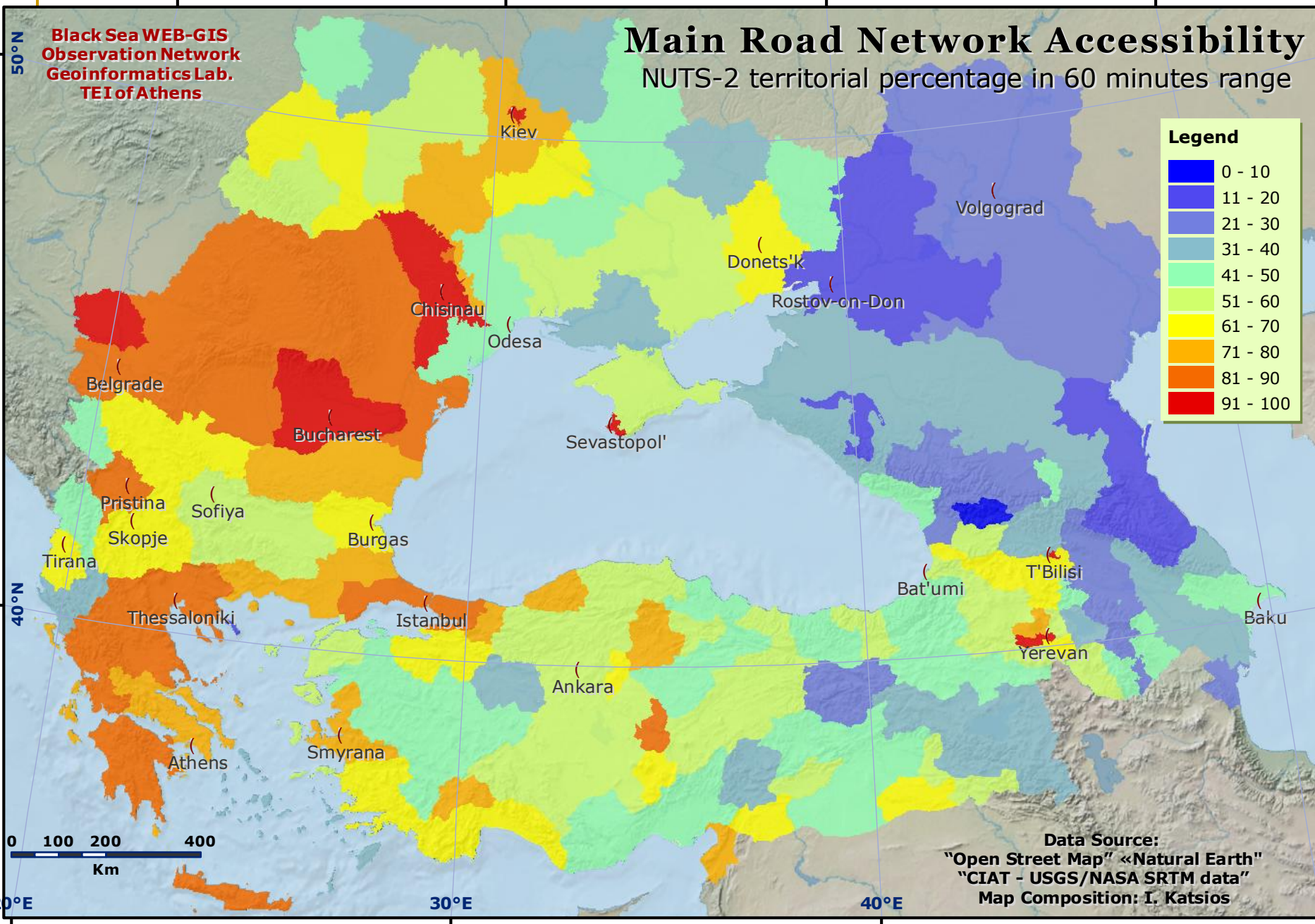
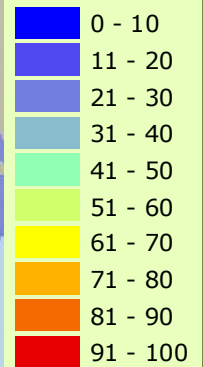


# Main Road Network Accessibility

NUTS-2 territorial percentage in 60 minutes range

Black Sea WEB-GIS  
Observation Network  
Geoinformatics Lab.  
TEI of Athens

## Legend





**Director General: Dr. Zefi Dimadama**

4 Xenophontos Str. 10557 Athens, Greece

Tel: +302103242321 Fax: +302103242244 Email: [icbss@icbss.org](mailto:icbss@icbss.org)

**Research Group:**

Ass. Prof. **Ioannis Katsios** (project supervisor)

Prof. **Polyxeni Iliopoulou**, Ass. Prof. **Andreas Tsatsaris**,  
**Dionissios Bekatoros** (programmer) **Iliadis Spyridon** (web design)  
**Alexia Timotheou** (ICBSS consultant)

Email: [iokat@teiath.gr](mailto:iokat@teiath.gr)

in collaboration with:

Prof. **Grigorios Kafkalas**

Aristotle University of Thessaloniki, Spatial Development Research Unit – SDRU



TECHNOLOGICAL EDUCATIONAL INSTITUTE OF ATHENS  
DEPARTMENT OF LAND SURVEYING ENGINEERING  
LABORATORY OF GEOINFORMATICS

